

Product Installation Guidelines & Scope of Use

Version 1.1, 24 September 2025, Page 1 of 4
Document No:50050 and 50062

GalvinCare® CP-BS MH Ligature Resistant Drinking Spout 15 MI x 75mm Long

PRODUCT CODES:

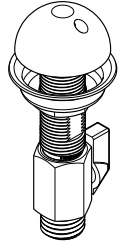
- 50050
- 50062



50050



50062



SPECIFICATIONS

- The GalvinCare® Drinking/Basin Outlet is made of DR Brass with a chrome plated outlet dome
- Galvin Engineering recommends the installation of strainers and pressure reducing valves prior to installing the drinking and basin outlets to ensure clean consistent supply. Debris or poor water quality could cause the taps to seize or fail.

IMPORTANT: All GalvinCare® Ligature Resistant taps are tested in accordance with AS 3718 and leave our premises in good working order.

TECHNICAL DATA

| | | |
|--------------------------------|----------------|-----|
| Inlet | ½" BSP – Male | |
| Outlet | Drinking/Basin | |
| Headwork | N/A | |
| Working Pressure Range (kPa) | Min | 50 |
| | Max | 500 |
| Working Temperature Range (°C) | Min | 5 |
| | Max | 70 |
| Nominal Flow Rate (LPM) | 50050 | 2 |
| | 50062 | 6 |
| Finish | Chrome | |

NOTE: Galvin Engineering continually strive to improve their products. Specifications may change without notice.

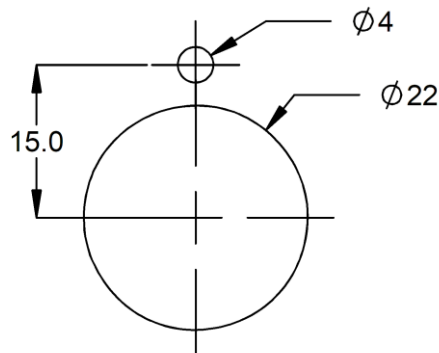
TOOLS REQUIRED

- Power drill
- Spanner or adjustable crescent

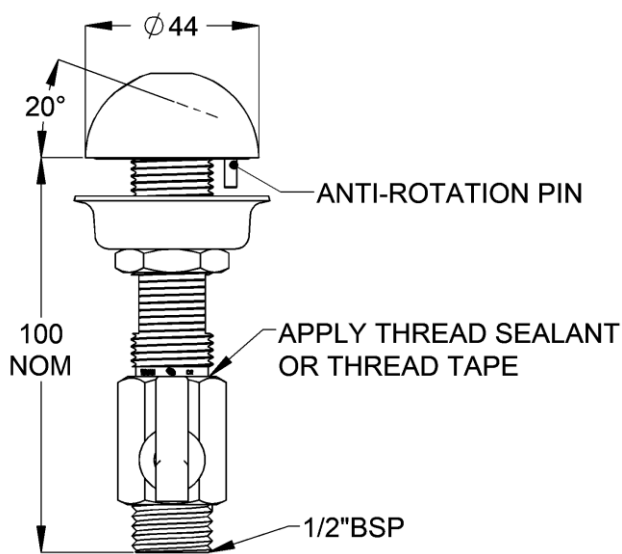
PRE-INSTALLATION

MOUNTING DETAILS

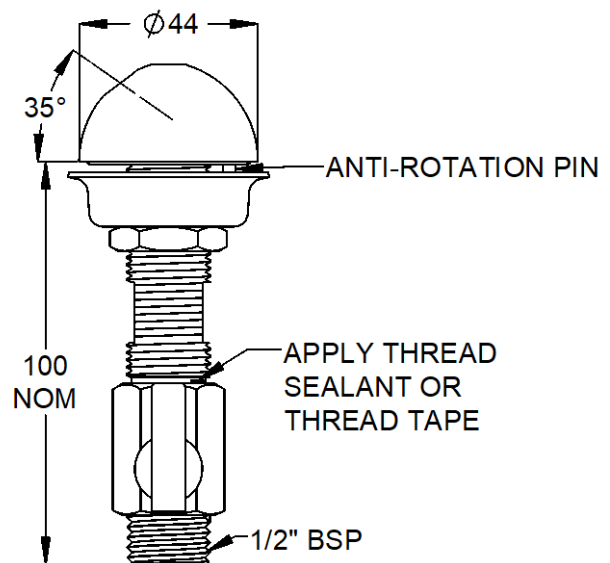
- If the mounting holes do not already exist, mark out and drill the holes in the bench/trough, as shown in rough-in dimensions.
- Ensure alignment of 4mm hole is as shown, as this will determine direction of water flow.



ROUGH IN DETAILS



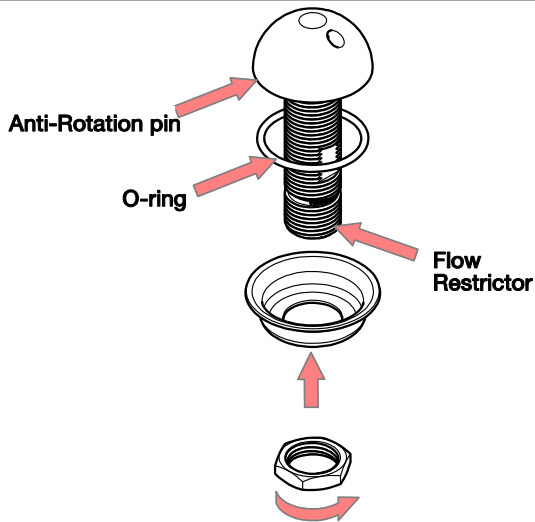
50050



50062

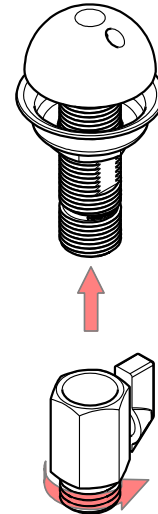
INSTALLATION

INSTALLATION COMPLIANCE: Galvin Engineering products must be installed in accordance with these installation instructions and in accordance with AS/NZS 3500, the PCA and your local regulatory requirements. Water and/or electrical supply conditions must also comply to the applicable national and/or state standards. Failing to comply with these provisions shall void the product warranty and may affect the performance of the product.



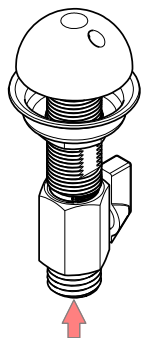
1. Fit outlet

- Fit the outlet into the bench.
- Ensure the sealing o-ring is placed underneath the dome outlet and the anti-rotation pin locates properly.
- Secure underneath with the supplied cup washer and back nut.



2. Assemble regulating valve

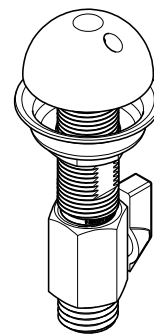
- Fix isolation valve to the outlet.
- Apply thread sealant or thread tape. Take care not to over-tighten.



WATER SUPPLY

3. Connect the water line

- Connect water supply to isolation valve inlet.



4. Testing

- Inspect the tap and check for any leaks. Adjust flow with isolation valve, so required flow is achieved.

TROUBLESHOOTING

| PROBLEM | CAUSE | RECTIFICATION |
|---|------------------------------|--|
| Water is not flowing or inconsistent flow | Blocked flow restrictor | Remove flow regulator from outlet and remove debris. Install an inline strainer to stop further blockage |
| Rate of flow inadequate | Isolation valve not adjusted | Adjust Isolation valve to achieve desired flow |

WARRANTY

Galvin Engineering products are covered under our Manufacturer's Warranty. Galvin Engineering products must be installed in accordance with the installation instructions and in accordance with AS/NZS 3500 and NCC Volume Three, relevant Australian Standards and local authorities applicable to product being installed. Water and electrical supply conditions must also comply to the applicable national and/or state standards, failing to comply with these provisions may void the product warranty and affect performance of the product.

Please visit www.galvinengineering.com.au to view the full warranty, our Installation Compliance and Maintenance & Cleaning information as well as any other additional information.

DEFINITIONS AND DISCLAIMER

Galvin Engineering manufactures a range of products marked as Ligature Resistant or Vandal Resistant. Please visit www.galvinengineering.com.au to read the definition of these terms and the disclaimer that applies to these products.

Within Australia: 1300 514 074 Outside Australia: P: +61 (0)8 9338 2344

F: +61 (0)8 9338 2340

sales@galvinengineering.com.au

www.galvinengineering.com.au

ABN: 78 008 719 382

PERTH | SYDNEY | MELBOURNE | BRISBANE | ADELAIDE

